

MOTORS WITH POWER UP TO 850 W

T SERIES - Non reversible

WATT: 820 / CONSUMPTION: 1300 NI/1'

Data sheet
T30S



1. Cylindrical keyed shaft
2. Grip zone
3. Air inlet
4. Air exhaust

Technical specification

Left rotation - Model	T30S
Left rotation - Code	8721202
Speed rpm - No-load	2550
Speed rpm - at Max Power	1300
Torque Nm - at Max Power	6
Torque Nm - Stall Torque	13

Form features

The normal delivery condition: cylindrical shaft and body as shown in the photo.

Optional:

Shaft

- threaded - indication /AF (left rotation excluded - subject to checks for reversible)

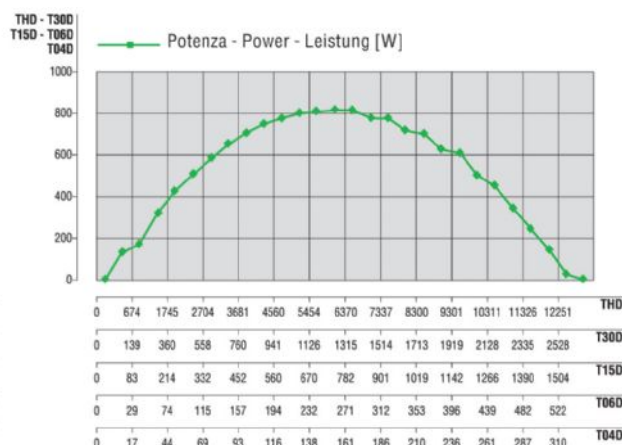
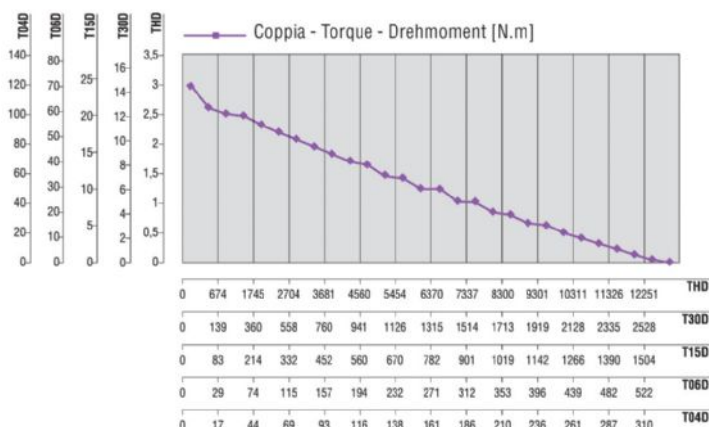
- conical - indication /AC

- with collets - indication /AP

Body

- with diamond flange coupling

Characteristic curves



MOTORS WITH POWER UP TO 850 W

T SERIES - Non reversible

WATT: 820 / CONSUMPTION: 1300 NI/1'

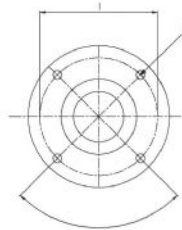
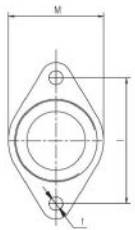
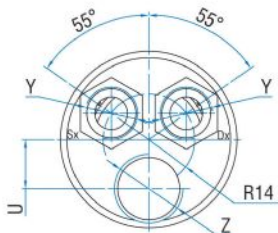
Data sheet
T30S

Permissible radial and axial loads

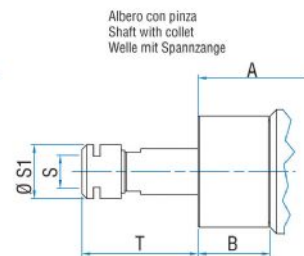
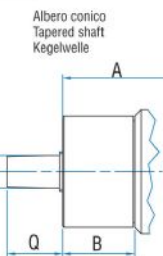
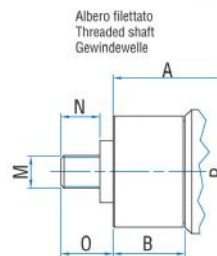
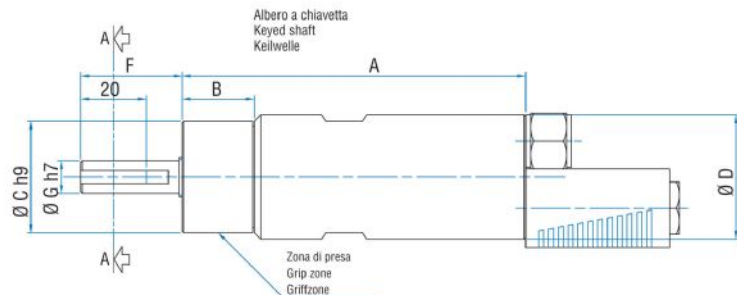
Model	Code	Fr (N)	Fa (N)	Co (N)
T30S	8721202	2050	2350	4750

Overall dimensions

Serie T Non reversibili
Series T Non-reversible
Serie T Nicht umsteuerbar



Flange disponibili per alcuni modelli.
Flanges available for some models.
Flansche erhältlich für einige Modelle.



Model	Code	A	B	C	D	F	G	H	I	L	M	N	O	P	Q
T30S	8721202	199,5	31,5	48	54	31,5	14	3	5	M6	1/2"x20UNF	16,5	21,5	B12	26