

MOTORS WITH POWER UP TO 850 W

T SERIES - Non reversible

WATT: 820 / CONSUMPTION: 1300 NI/1'

Data sheet
T30D



1. Cylindrical keyed shaft
2. Grip zone
3. Air inlet
4. Air exhaust

Technical specification

| | |
|--------------------------|---------|
| Right rotation - Model | T30D |
| Right rotation - Code | 8711202 |
| Speed rpm - No-load | 2550 |
| Speed rpm - at Max Power | 1300 |
| Torque Nm - at Max Power | 6 |
| Torque Nm - Stall Torque | 13 |

Form features

The normal delivery condition: cylindrical shaft and body as shown in the photo.

Optional:

Shaft

- threaded - indication /AF (left rotation excluded - subject to checks for reversible)

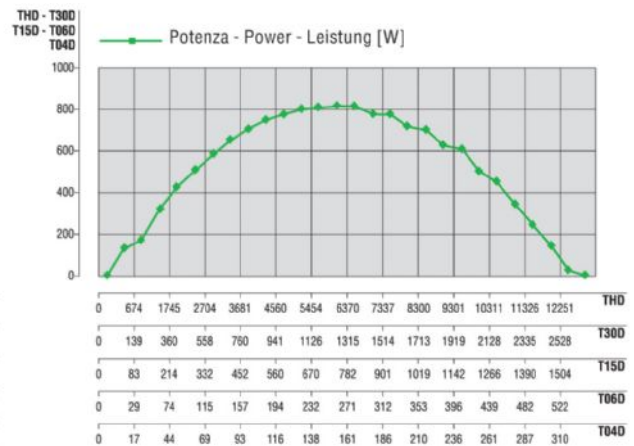
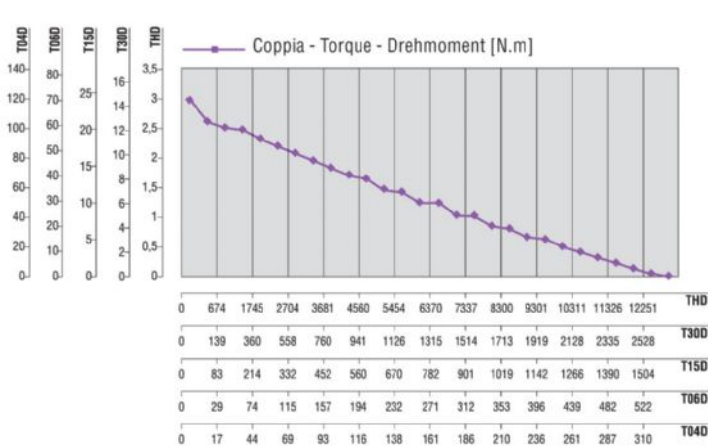
- conical - indication /AC

- with collets - indication /AP

Body

- with diamond flange coupling

Characteristic curves



MOTORS WITH POWER UP TO 850 W

T SERIES - Non reversible

WATT: 820 / CONSUMPTION: 1300 NI/1'

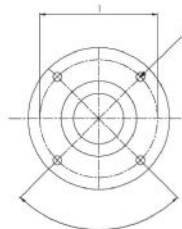
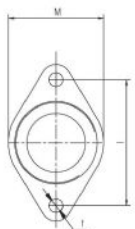
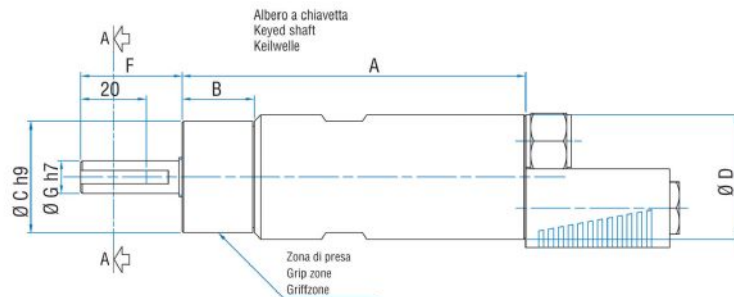
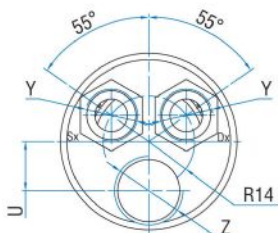
Data sheet
T30D

Permissible radial and axial loads

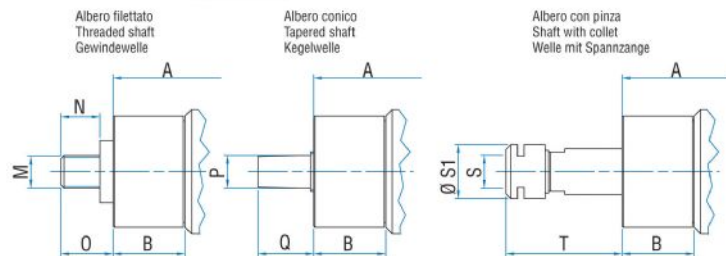
| Model | Code | Fr (N) | Fa (N) | Co (N) |
|-------|---------|--------|--------|--------|
| T30D | 8711202 | 2050 | 2350 | 4750 |

Overall dimensions

Serie T Non reversibili
Series T Non-reversible
Serie T Nicht umsteuerbar



Flange disponibili per alcuni modelli.
Flanges available for some models.
Flansche erhältlich für einige Modelle.



| Model | Code | A | B | C | D | F | G | H | I | L | M | N | O | P | Q |
|-------|---------|-------|------|----|----|------|----|---|---|----|------------|------|------|-----|----|
| T30D | 8711202 | 199,5 | 31,5 | 48 | 54 | 31,5 | 14 | 3 | 5 | M6 | 1/2"x20UNF | 16,5 | 21,5 | B12 | 26 |