

MOTORS WITH POWER UP TO 850 W

T SERIES - Reversible

WATT: 740 / CONSUMPTION: 1100 NI/1'

Data measured at pressure of 6 bar - Minimum supply hose diameter: 12 mm

Data sheet
T06R



- 1. Cylindrical keyed shaft
- 2. Grip zone
- 3. Air inlets
- 4. Air exhaust

Technical specification

- Model	T06R
- Code	8731205
Speed rpm - No-load	550
Speed rpm - at Max Power	280
Torque Nm - at Max Power	24,5
Torque Nm - Stall Torque	37,4

Form features

The normal delivery condition: cylindrical shaft and body as shown in the photo.

Optional:

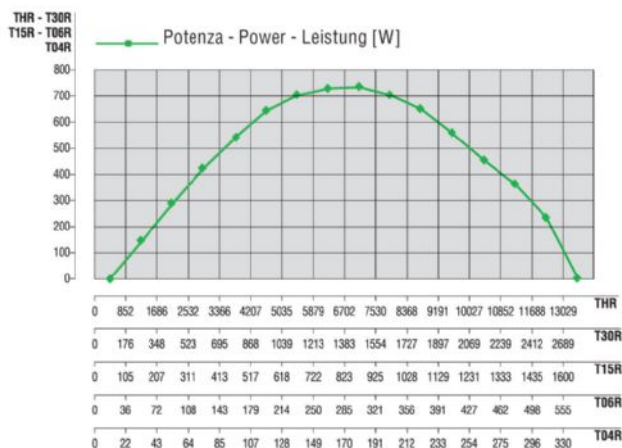
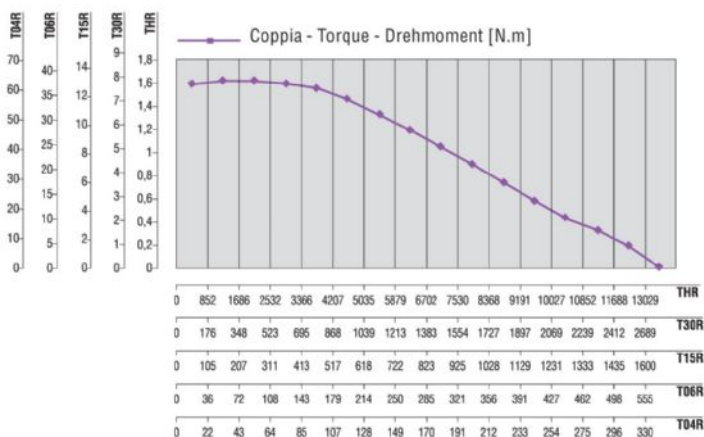
Shaft

- threaded - indication /AF (left rotation excluded - subject to checks for reversible)

- conical - indication /AC

- with collets - indication / AP

Characteristic curves



MOTORS WITH POWER UP TO 850 W

T SERIES - Reversible

WATT: 740 / CONSUMPTION: 1100 NI/1'

Data measured at pressure of 6 bar - Minimum supply hose diameter: 12 mm

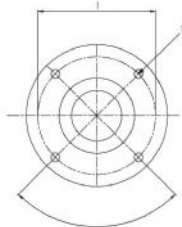
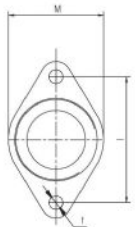
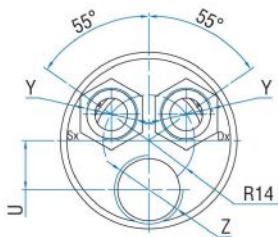
Data sheet
T06R

Permissible radial and axial loads

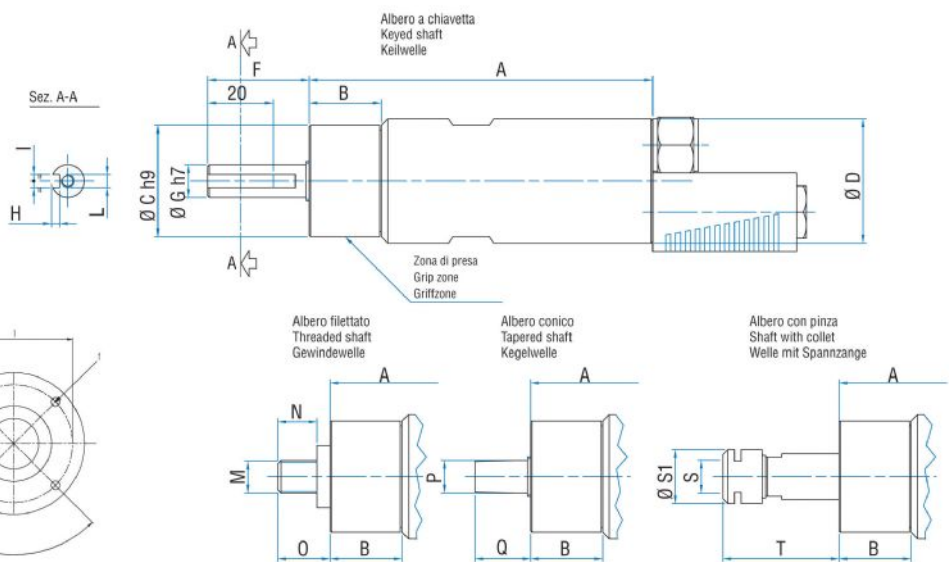
Model	Code	Fr (N)	Fa (N)	Co (N)
T06R	8731205	2050	2350	4750

Overall dimensions

Serie T Reversibile
Series T Reversible
Serie T Umsteuerbar



Flange disponibili per alcuni modelli.
Flanges available for some models.
Flansche erhältlich für einige Modelle.



Model	Code	A	B	C	D	F	G	H	I	L	M	N	O	P	Q
T06R	8731205	199,5	31,5	48	54	31,5	14	3	5	M6	1/2"x20UNF	16,5	21,5	B12	26