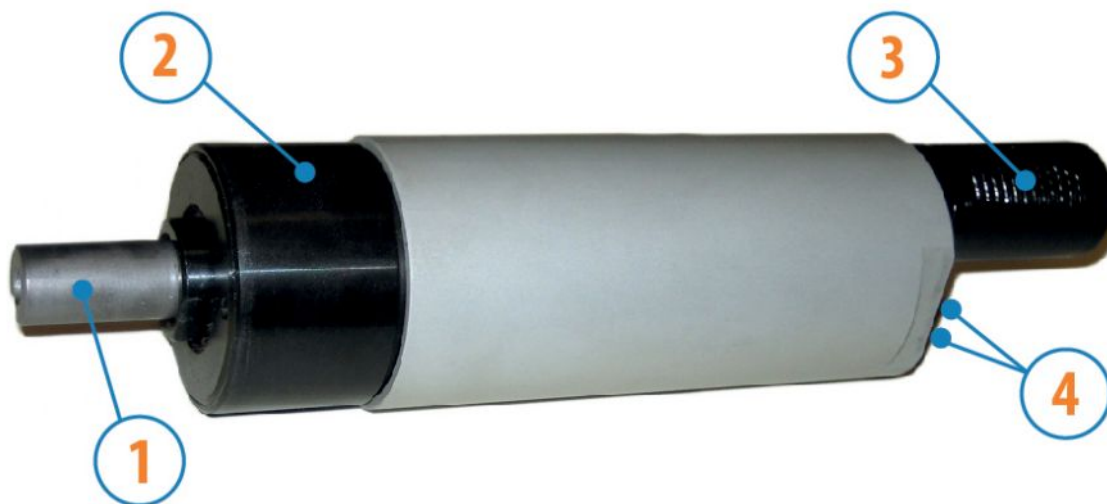


MOTORS WITH POWER UP TO 850 W

SP SERIES - Reversible

WATT: 610 / CONSUMPTION: 890 NI/1"

Data sheet
SPHR



1. Cylindrical keyed shaft
2. Grip zone
3. Air exhaust
4. Air inlets

Technical specification

- Model	SPHR
- Code	8731250
Speed rpm - No-load	14000
Speed rpm - at Max Power	6920
Torque Nm - at Max Power	0,8
Torque Nm - Stall Torque	1,5

Form features

The normal delivery condition: cylindrical shaft and body as shown in the photo.

Optional:

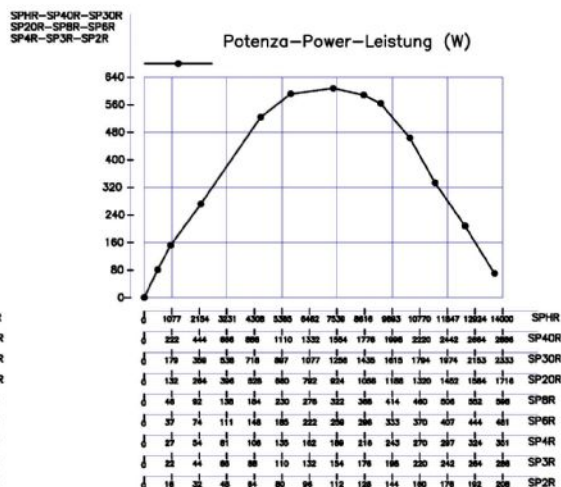
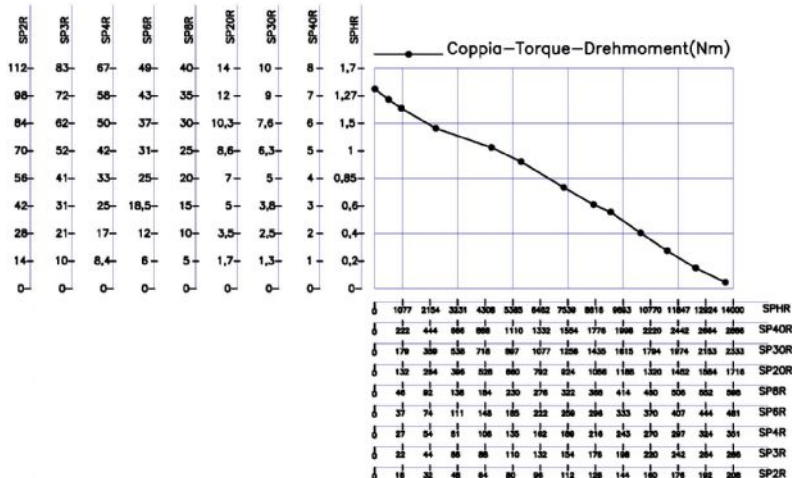
Shaft

- threaded - indication /AF (left rotation excluded - subject to checks for reversible)

- conical - indication /AC

- with collets - indication / AP

Characteristic curves



MOTORS WITH POWER UP TO 850 W

SP SERIES - Reversible

WATT: 610 / CONSUMPTION: 890 NI/1"

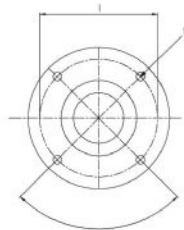
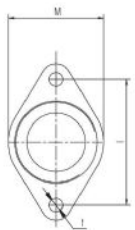
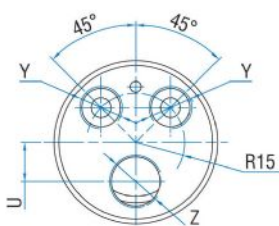
Data sheet
SPHR

Permissible radial and axial loads

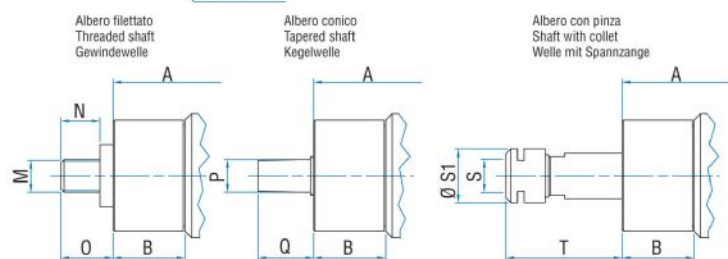
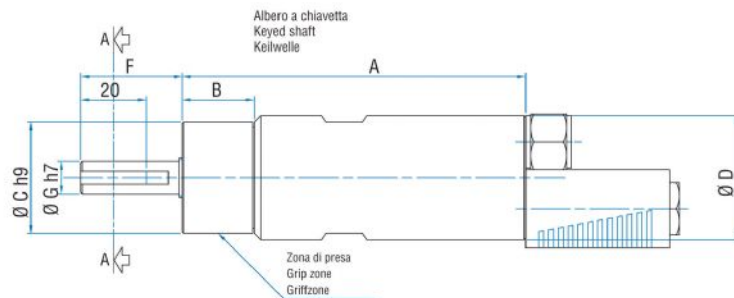
Model	Code	Fr (N)	Fa (N)	Co (N)
SPHR	8731250	2050	2350	4750

Overall dimensions

Serie SP Reversibile
Series SP Reversible
Serie SP Umsteuerbar



Flange disponibili per alcuni modelli.
Flanges available for some models.
Flansche erhältlich für einige Modelle.



Model	Code	A	B	C	D	F	G	H	I	L	M	N	O	P	Q	S
SPHR	8731250	146	31	48	50	31,5	14	/	/	M6	1/2"x20UNF	16	20,5	B12	26,5	ER16