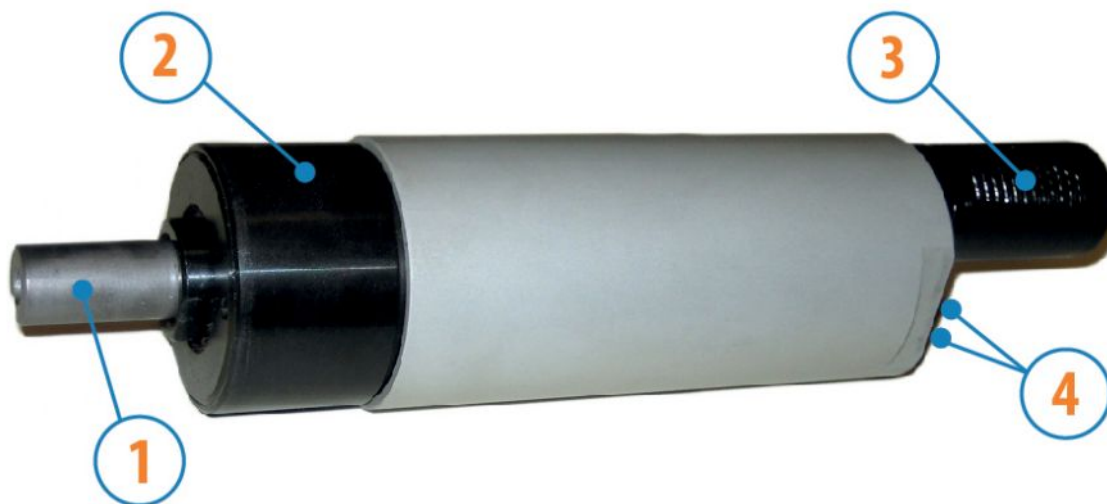


MOTORS WITH POWER UP TO 850 W

SP SERIES - Reversible

WATT: 610 / CONSUMPTION: 890 NI/1"

Data sheet
SP8R



1. Cylindrical keyed shaft
2. Grip zone
3. Air exhaust
4. Air inlets

Technical specification

- Model	SP8R
- Code	8731254
Speed rpm - No-load	600
Speed rpm - at Max Power	295
Torque Nm - at Max Power	19,8
Torque Nm - Stall Torque	36,0

Form features

The normal delivery condition: cylindrical shaft and body as shown in the photo.

Optional:

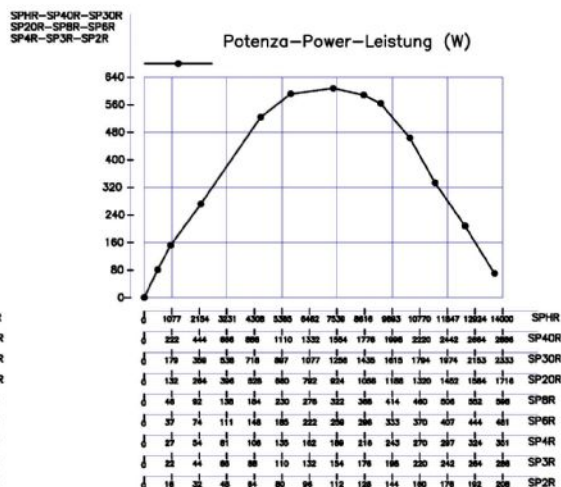
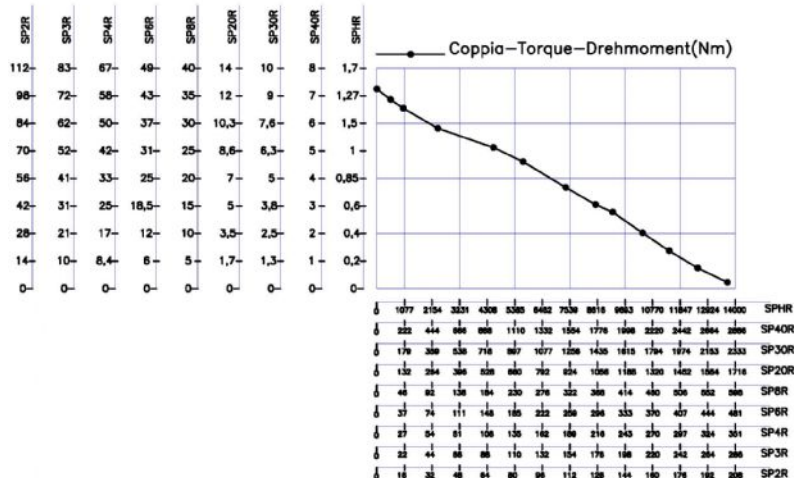
Shaft

- threaded - indication /AF (left rotation excluded - subject to checks for reversible)

- conical - indication /AC

- with collets - indication / AP

Characteristic curves



MOTORS WITH POWER UP TO 850 W

SP SERIES - Reversible

WATT: 610 / CONSUMPTION: 890 NI/1"

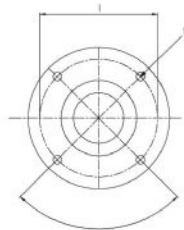
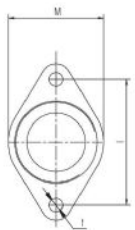
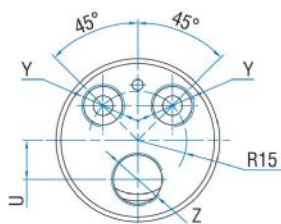
Data sheet
SP8R

Permissible radial and axial loads

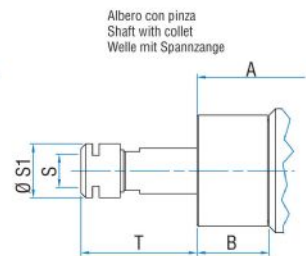
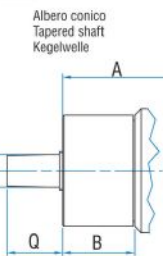
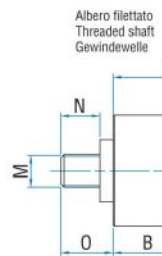
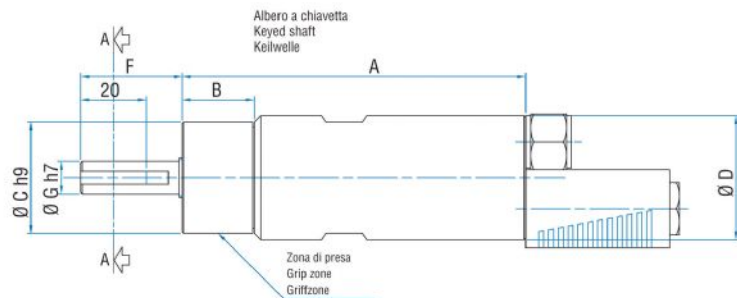
Model	Code	Fr (N)	Fa (N)	Co (N)
SP8R	8731254	2050	2350	4750

Overall dimensions

Serie SP Reversibile
Series SP Reversible
Serie SP Umsteuerbar



Flange disponibili per alcuni modelli.
Flanges available for some models.
Flansche erhältlich für einige Modelle.



Model	Code	A	B	C	D	F	G	H	I	L	M	N	O	P	Q	S	S
SP8R	8731254	174	59	48	50	31,5	14	3	5	M6	1/2"x20UNF	16	20,5	B12	26	ER16	2