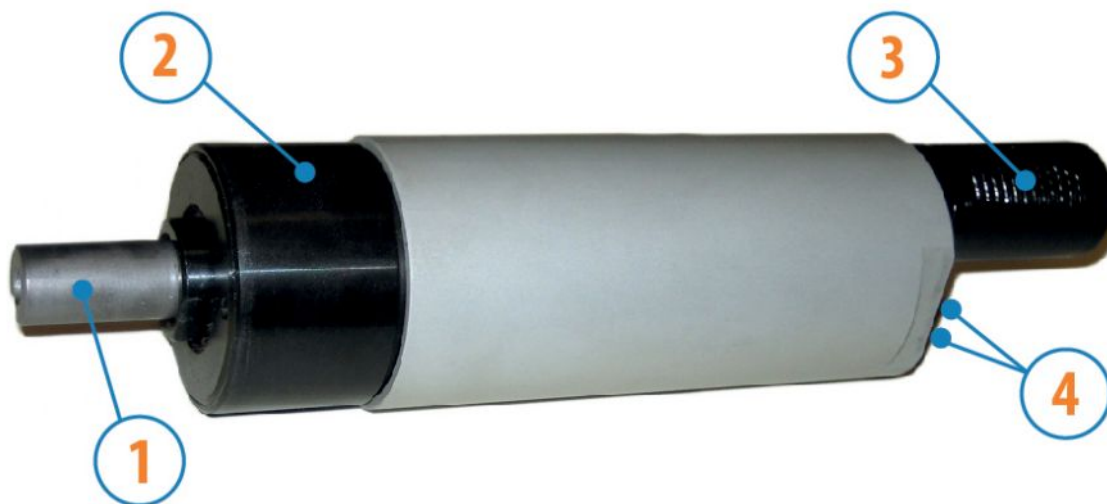


# MOTORS WITH POWER UP TO 850 W

SP SERIES - Reversible

WATT: 610 / CONSUMPTION: 890 NI/1"

Data sheet  
**SP20R**



1. Cylindrical keyed shaft
2. Grip zone
3. Air exhaust
4. Air inlets

## Technical specification

- Model	SP20R
- Code	8731253
Speed rpm - No-load	1700
Speed rpm - at Max Power	800
Torque Nm - at Max Power	6,9
Torque Nm - Stall Torque	12,5

## Form features

The normal delivery condition: cylindrical shaft and body as shown in the photo.

Optional:

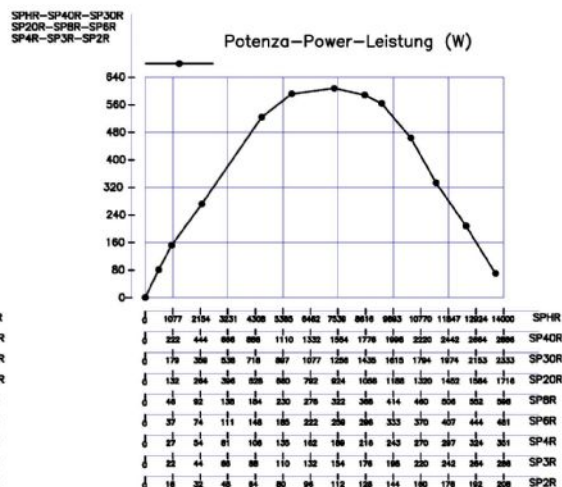
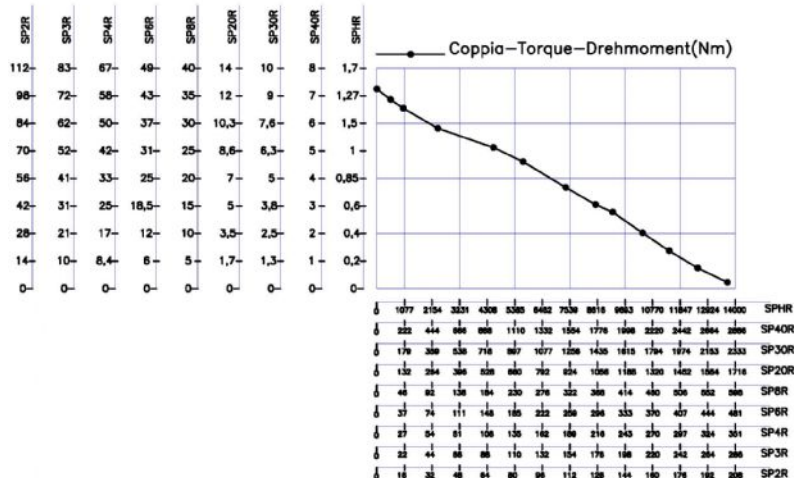
Shaft

- threaded - indication /AF (left rotation excluded - subject to checks for reversible)

- conical - indication /AC

- with collets - indication / AP

## Characteristic curves



# MOTORS WITH POWER UP TO 850 W

SP SERIES - Reversible

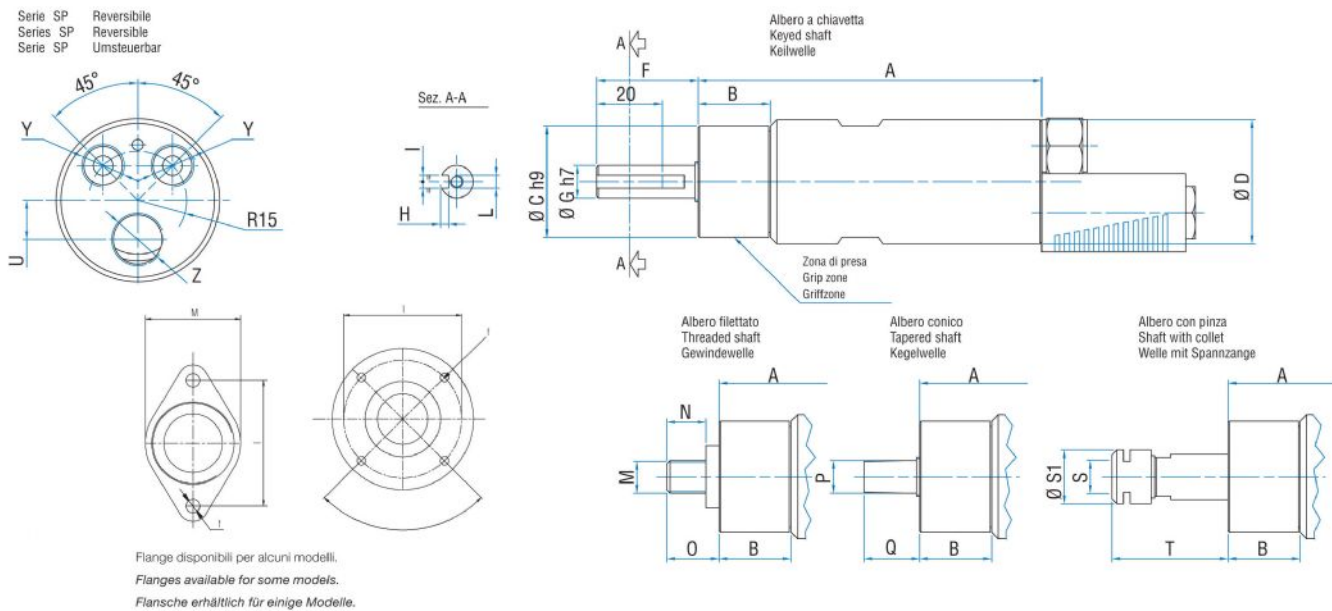
WATT: 610 / CONSUMPTION: 890 NI/1"

Data sheet  
**SP20R**

## Permissible radial and axial loads

Model	Code	Fr (N)	Fa (N)	Co (N)
SP20R	8731253	2050	2350	4750

## Overall dimensions



Model	Code	A	B	C	D	F	G	H	I	L	M	N	O	P	Q	S	S
SP20R	8731253	146	31	48	50	31,5	14	3	5	M6	1/2"x20UNF	16	20,5	B12	26	ER16	2