

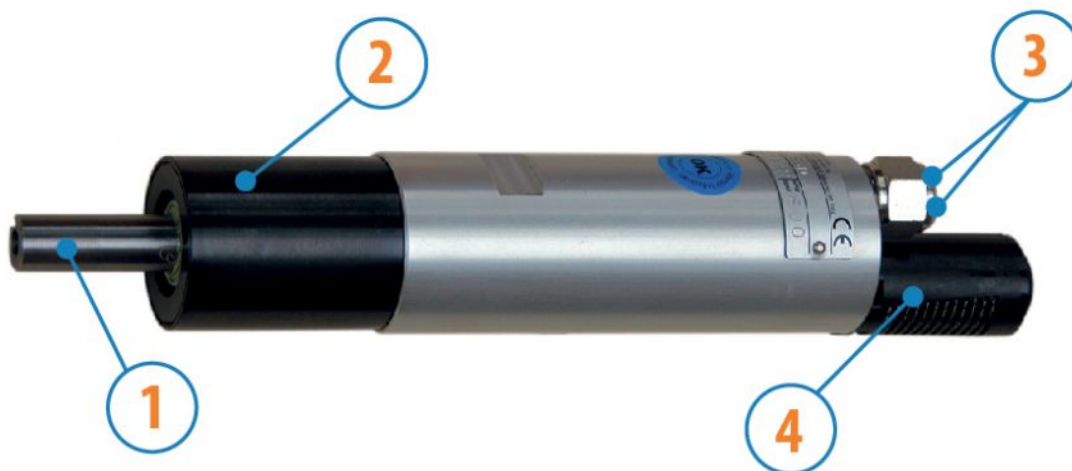
MOTORS WITH POWER UP TO 850 W

SLGS SERIES - Reversible

WATT: 410 / CONSUMPTION: 720 NI/1'

Data measured at pressure of 6 bar - Minimum supply hose diameter: 10 mm

Data sheet
SLGS5R



1. Cylindrical keyed shaft
2. Grip zone
3. Air inlets
4. Air exhaust

Technical specification

- Model	SLGS5R
- Code	8731198
Speed rpm - No-load	440
Speed rpm - at Max Power	220
Torque Nm - at Max Power	17,7
Torque Nm - Stall Torque	25,2

Form features

The normal delivery condition: cylindrical shaft and body as shown in the photo.

Optional:

Shaft

- threaded - indication /AF (left rotation excluded - subject to checks for reversible)

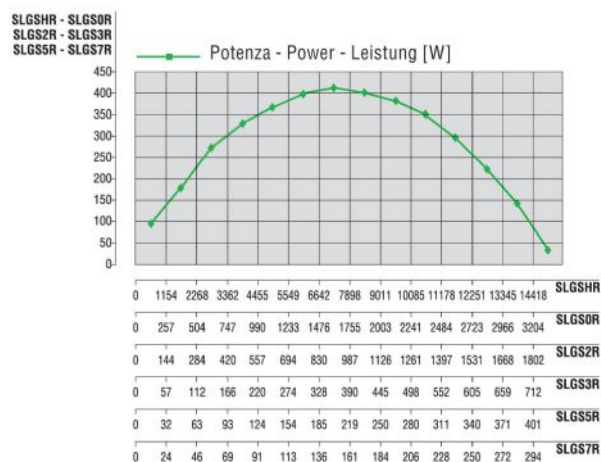
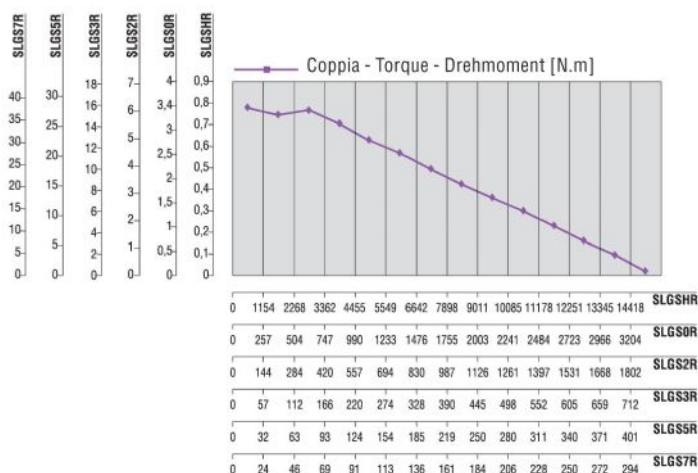
- conical - indication /AC

- with collets - indication / AP

Body

- with diamond flange coupling

Characteristic curves



MOTORS WITH POWER UP TO 850 W

SLGS SERIES - Reversible

WATT: 410 / CONSUMPTION: 720 NI/1'

Data measured at pressure of 6 bar - Minimum supply hose diameter: 10 mm

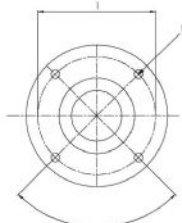
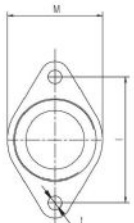
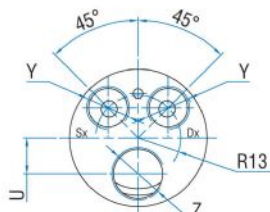
Data sheet
SLGS5R

Permissible radial and axial loads

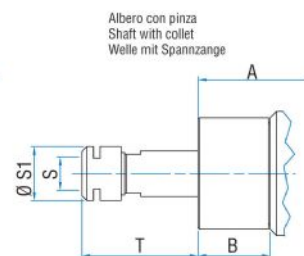
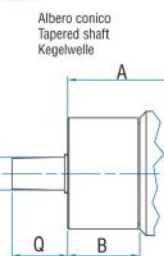
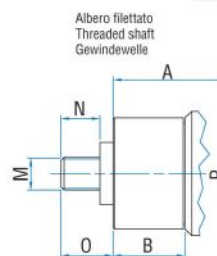
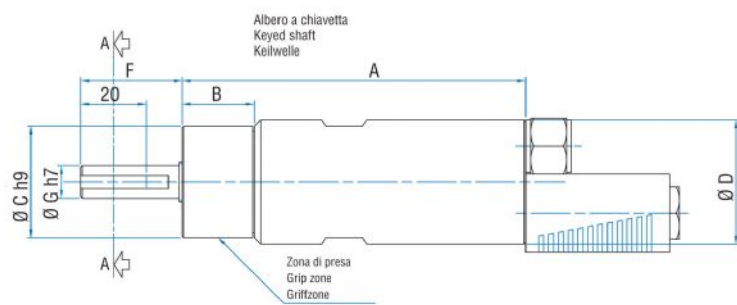
Model	Code	Fr (N)	Fa (N)	Co (N)
SLGS5R	8731198	1000	1850	3750

Overall dimensions

Serie SLGS Reversibile
Series SLGS Reversible
Serie SLGS Umsteuerbar



Flange disponibili per alcuni modelli.
Flanges available for some models.
Flansche erhältlich für einige Modelle.



Model	Code	A	B	C	D	F	G	H	I	L	M	N	O	P	Q	S
SLGS5R	8731198	168,5	51,5	40	42	36	13	3	5	M5	1/2"x20UNF	16	20,5	B12	21	ER16