

MOTORS WITH POWER UP TO 850 W

SLGS SERIES - Reversible

WATT: 410 / CONSUMPTION: 720 NI/1'

Data measured at pressure of 6 bar - Minimum supply hose diameter: 10 mm

Data sheet
SLGS2R



1. Cylindrical keyed shaft
2. Grip zone
3. Air inlets
4. Air exhaust

Technical specification

- Model	SLGS2R
- Code	8731196
Speed rpm - No-load	1960
Speed rpm - at Max Power	990
Torque Nm - at Max Power	3,9
Torque Nm - Stall Torque	5,6

Form features

The normal delivery condition: cylindrical shaft and body as shown in the photo.

Optional:

Shaft

- threaded - indication /AF (left rotation excluded - subject to checks for reversible)

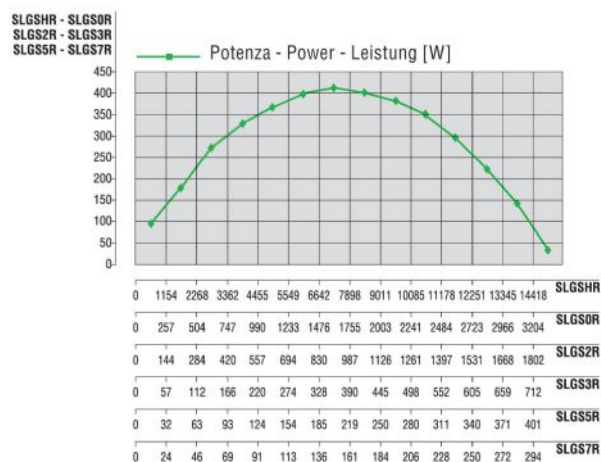
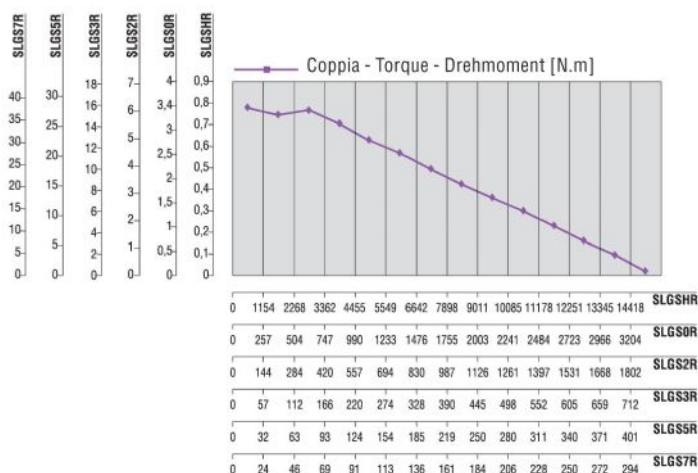
- conical - indication /AC

- with collets - indication / AP

Body

- with diamond flange coupling

Characteristic curves



MOTORS WITH POWER UP TO 850 W

SLGS SERIES - Reversible

WATT: 410 / CONSUMPTION: 720 NI/1'

Data measured at pressure of 6 bar - Minimum supply hose diameter: 10 mm

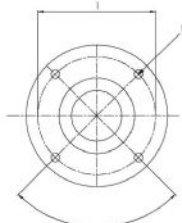
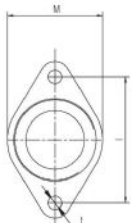
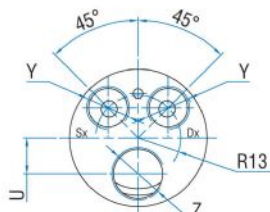
Data sheet
SLGS2R

Permissible radial and axial loads

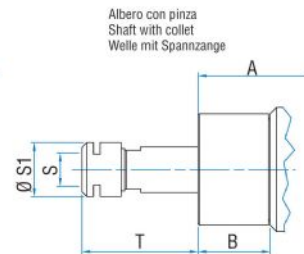
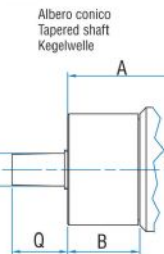
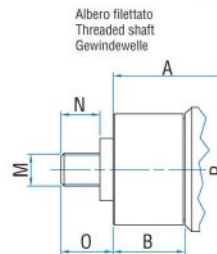
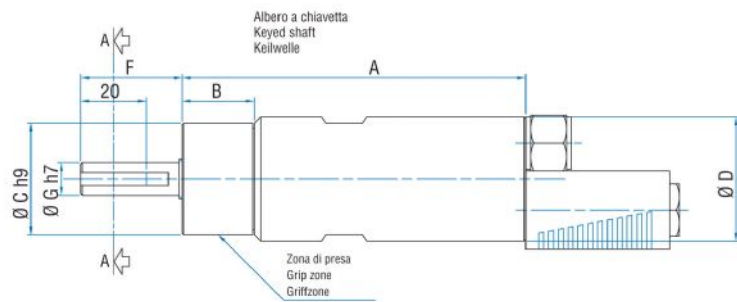
Model	Code	Fr (N)	Fa (N)	Co (N)
SLGS2R	8731196	1000	1850	3750

Overall dimensions

Serie SLGS Reversibile
Series SLGS Reversible
Serie SLGS Umsteuerbar



Flange disponibili per alcuni modelli.
Flanges available for some models.
Flansche erhältlich für einige Modelle.



Model	Code	A	B	C	D	F	G	H	I	L	M	N	O	P	Q	S
SLGS2R	8731196	143,5	26,5	40	42	36	13	3	5	M5	1/2"x20UNF	16	20,5	B12	21	ER16