

MOTORS WITH POWER UP TO 850 W

P SERIES - Reversible

WATT: 570 / CONSUMPTION: 830 NI/1'

Data measured at pressure of 6 bar - Minimum supply hose diameter: 10 mm

Data sheet
PHR



1. Cylindrical keyed shaft
2. Grip zone
3. Air inlets
4. Air exhaust

Technical specification

- Model	PHR
- Code	8731131
Speed rpm - No-load	19000
Speed rpm - at Max Power	10950
Torque Nm - at Max Power	0,5
Torque Nm - Stall Torque	0,8

Form features

The normal delivery condition: cylindrical shaft and body as shown in the photo.

Optional:

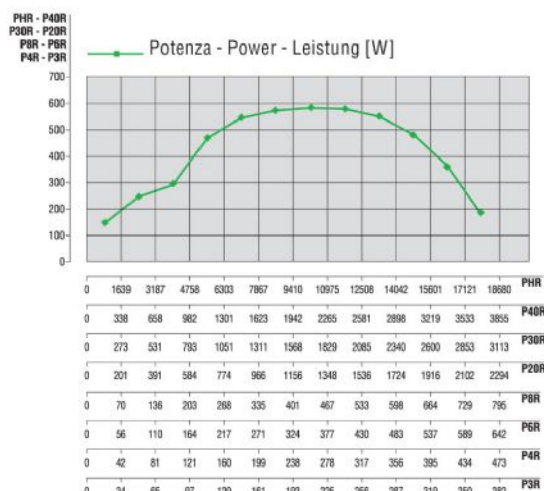
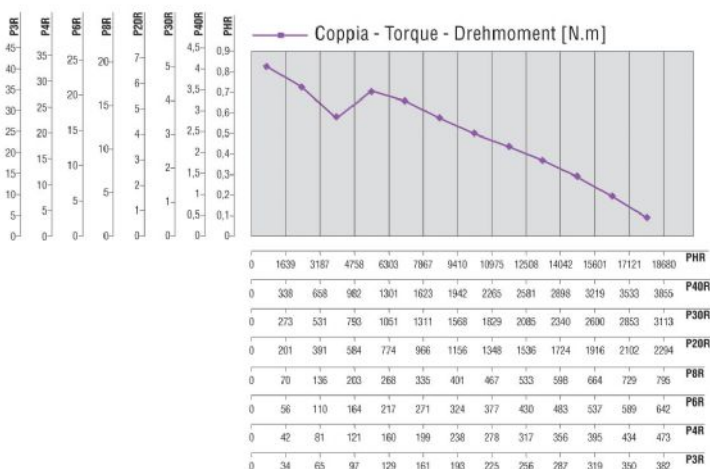
Shaft

- threaded - indication /AF (left rotation excluded - subject to checks for reversible)

- conical - indication /AC

- with collets - indication / AP

Characteristic curves



MOTORS WITH POWER UP TO 850 W

P SERIES - Reversible

WATT: 570 / CONSUMPTION: 830 NI/1'

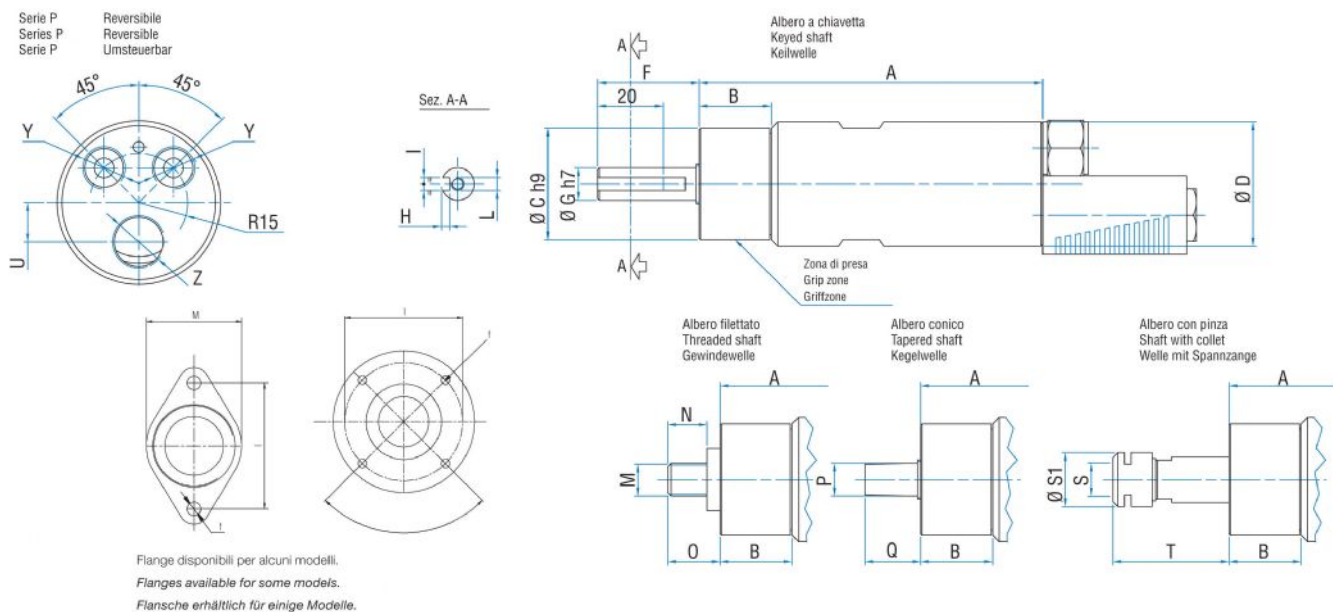
Data measured at pressure of 6 bar - Minimum supply hose diameter: 10 mm

Data sheet
PHR

Permissible radial and axial loads

Model	Code	Fr (N)	Fa (N)	Co (N)
PHR	8731131	1300	2350	4750

Overall dimensions



Model	Code	A	B	C	D	F	G	H	I	L	M	N	O	P	Q	S
PHR	8731131	126	31	48	50	31,5	14	/	/	M6	1/2"x20UNF	16	20,5	B12	26,5	ER16