

MOTORS WITH POWER UP TO 850 W

LFB SERIES - Non-reversible

WATT: 190 / CONSUMPTION: 480 NI/1'

Data sheet
LFB3S



1. Cylindrical keyed shaft
2. Grip zone
3. Air inlet
4. Air exhaust

Technical specification

Left rotation - Model	LFB3S
Left rotation - Code	8721185
Speed rpm - No-load	770
Speed rpm - at Max Power	420
Torque Nm - at Max Power	4,1
Torque Nm - Stall Torque	8,4

Form features

The normal delivery condition: cylindrical shaft and body as shown in the photo.

Optional:

Shaft

- threaded - indication /AF (left rotation excluded - subject to checks for reversible)

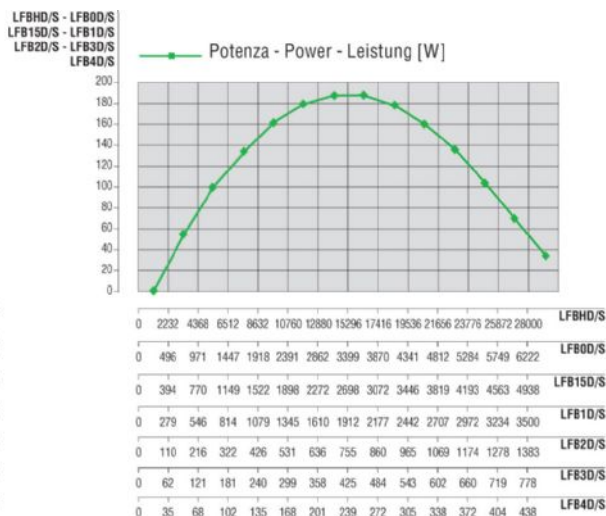
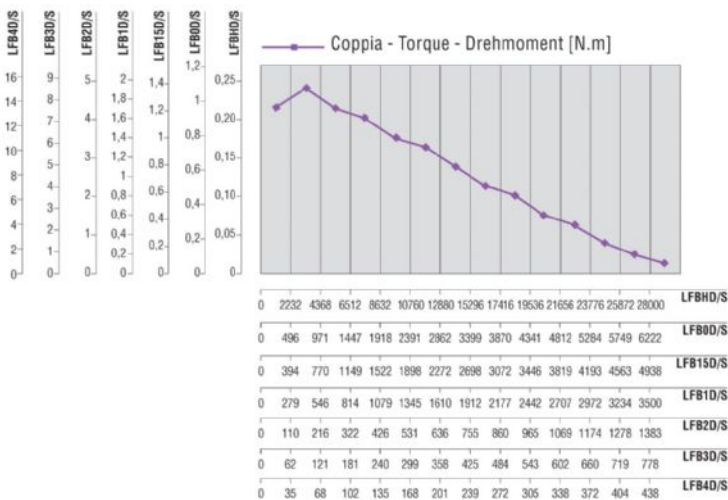
- conical - indication /AC

- with collets - indication / AP

Body

- with diamond flange coupling

Characteristic curves



MOTORS WITH POWER UP TO 850 W

LFB SERIES - Non-reversible

WATT: 190 / CONSUMPTION: 480 NI/1'

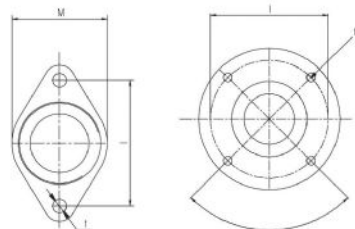
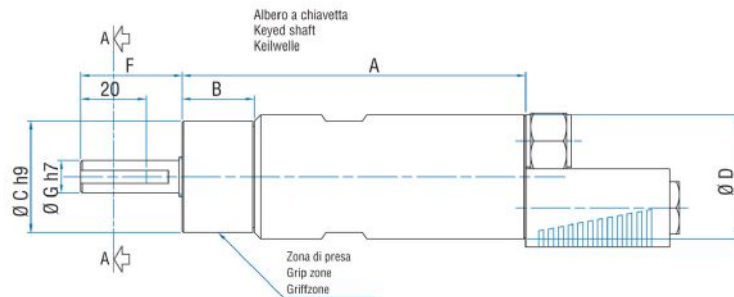
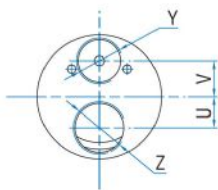
Data sheet
LFB3S

Permissible radial and axial loads

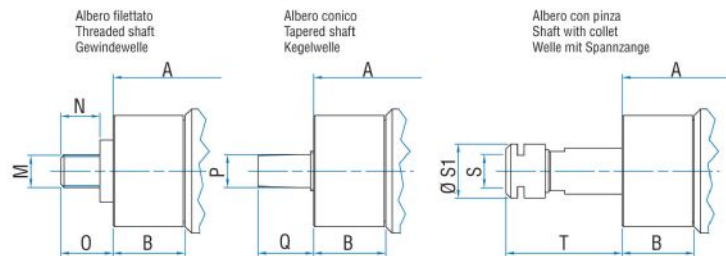
Model	Code	Fr (N)	Fa (N)	Co (N)
LFB3S	8721185	1050	550	2350

Overall dimensions

Serie LFB Non reversibili
Series LFB Non-reversible
Serie LFB Nicht umsteuerbar



Flange disponibili per alcuni modelli.
Flanges available for some models.
Flansche erhältlich für einige Modelle.



Model	Code	A	B	C	D	F	G	H	I	L	M	N	O	P	Q	S
LFB3S	8721185	129,7	46,7	34	38	31	10	2,5	4	M4	3/8"x24UNF	12	16	B10	17	ER16