

MOTORS WITH POWER UP TO 850 W

LFB SERIES - Reversible

WATT: 160 / CONSUMPTION: 400 NI/1'

Data measured at pressure of 6 bar - Minimum supply hose diameter: 6 mm.

Data sheet
LFB3R



1. Cylindrical keyed shaft
2. Grip zone
3. Air inlets
4. Air exhaust

Technical specification

- Model	LFB3R
- Code	8731185
Speed rpm - No-load	670
Speed rpm - at Max Power	410
Torque Nm - at Max Power	3,8
Torque Nm - Stall Torque	6,5

Form features

The normal delivery condition: cylindrical shaft and body as shown in the photo.

Optional:

Shaft

- threaded - indication /AF (left rotation excluded - subject to checks for reversible)

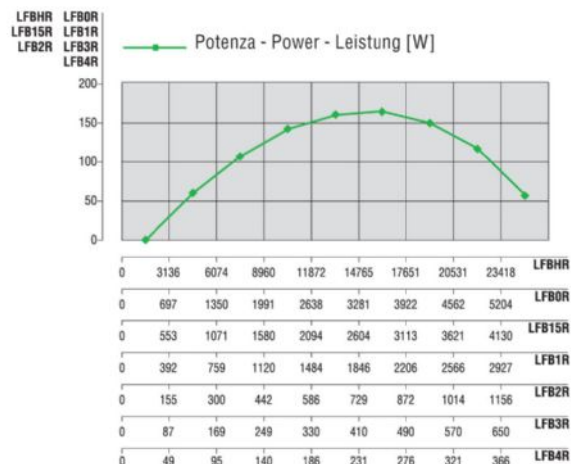
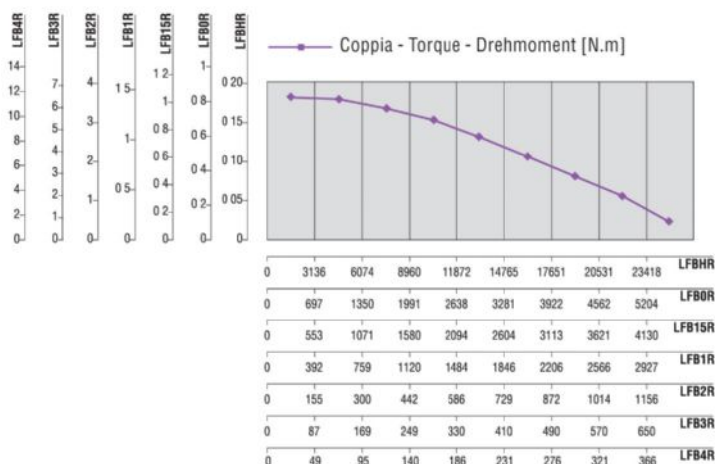
- conical - indication /AC

- with collets - indication / AP

Body

- with diamond flange coupling

Characteristic curves



MOTORS WITH POWER UP TO 850 W

LFB SERIES - Reversible

WATT: 160 / CONSUMPTION: 400 NI/1'

Data measured at pressure of 6 bar - Minimum supply hose diameter: 6 mm.

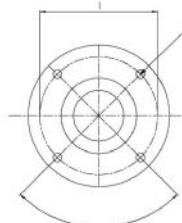
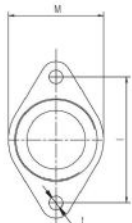
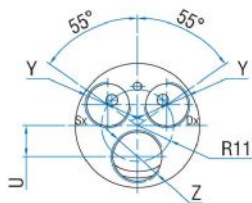
Data sheet
LFB3R

Permissible radial and axial loads

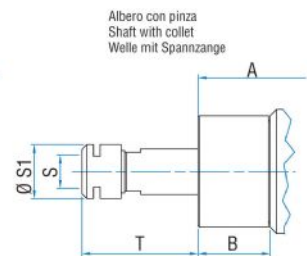
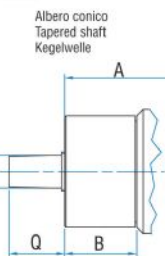
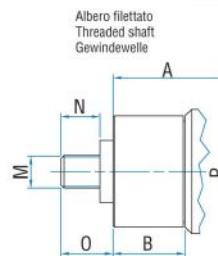
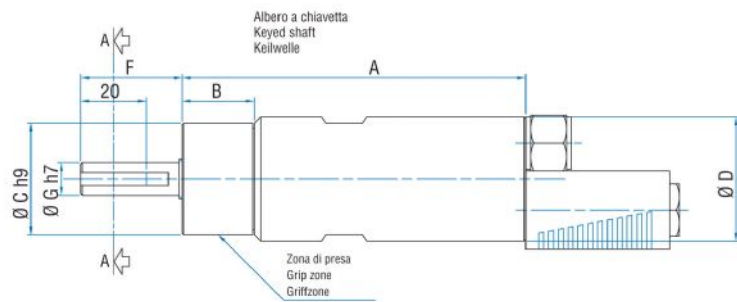
Model	Code	Fr (N)	Fa (N)	Co (N)
LFB3R	8731185	1050	550	2350

Overall dimensions

Serie LFB Reversible
Series LFB Reversible
SerieLFB Umsteuerbar



Flange disponibili per alcuni modelli.
Flanges available for some models.
Flansche erhältlich für einige Modelle.



Model	Code	A	B	C	D	F	G	H	I	L	M	N	O	P	Q	S
LFB3R	8731185	129,7	46,7	34	38	31	10	2,5	4	M4	3/8"x24UNF	12	16	B10	17	ER16