

# MOTORS WITH POWER UP TO 850 W

LFB SERIES - Reversible

WATT: 160 / CONSUMPTION: 400 NI/1'

Data measured at pressure of 6 bar - Minimum supply hose diameter: 6 mm.

Data sheet  
**LFB2R**



1. Cylindrical keyed shaft
2. Grip zone
3. Air inlets
4. Air exhaust

## Technical specification

- Model	LFB2R
- Code	8731184
Speed rpm - No-load	1200
Speed rpm - at Max Power	700
Torque Nm - at Max Power	2,1
Torque Nm - Stall Torque	3,6

## Form features

The normal delivery condition: cylindrical shaft and body as shown in the photo.

Optional:

Shaft

- threaded - indication /AF (left rotation excluded - subject to checks for reversible)

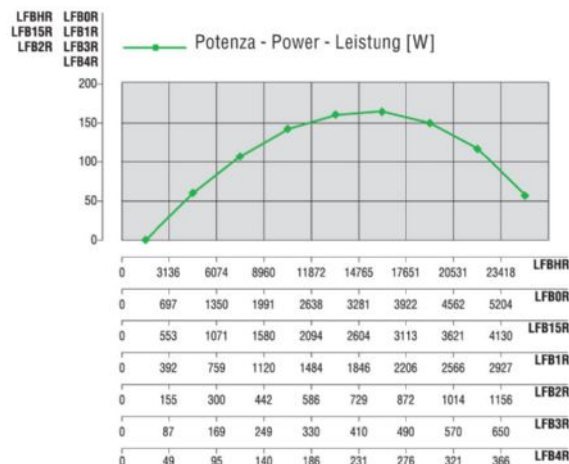
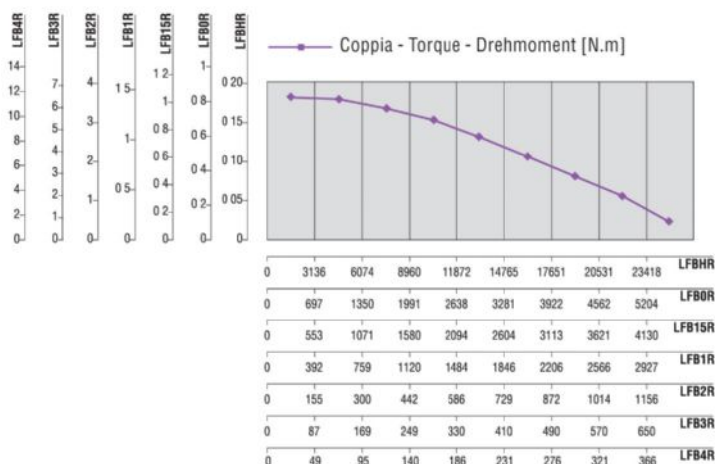
- conical - indication /AC

- with collets - indication / AP

Body

- with diamond flange coupling

## Characteristic curves



# MOTORS WITH POWER UP TO 850 W

LFB SERIES - Reversible

WATT: 160 / CONSUMPTION: 400 NI/1'

Data measured at pressure of 6 bar - Minimum supply hose diameter: 6 mm.

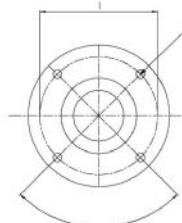
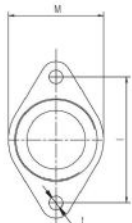
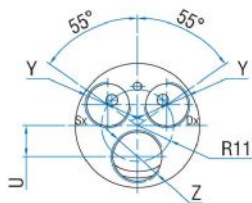
Data sheet  
**LFB2R**

## Permissible radial and axial loads

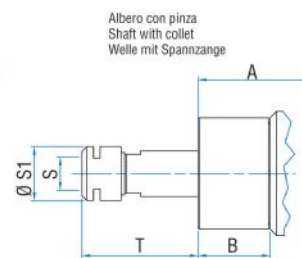
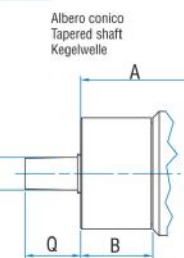
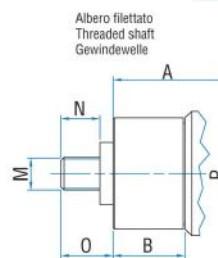
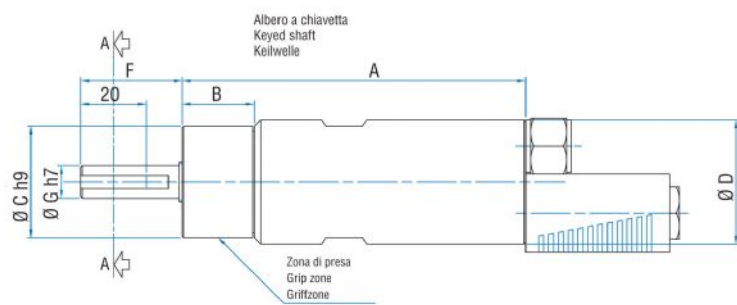
Model	Code	Fr (N)	Fa (N)	Co (N)
LFB2R	8731184	1050	550	2350

## Overall dimensions

Serie LFB Reversible  
Series LFB Reversible  
SerieLFB Umsteuerbar



Flange disponibili per alcuni modelli.  
Flanges available for some models.  
Flansche erhältlich für einige Modelle.



Model	Code	A	B	C	D	F	G	H	I	L	M	N	O	P	Q	S
LFB2R	8731184	129,7	46,7	34	38	31	10	2,5	4	M4	3/8"x24UNF	12	16	B10	17	ER16