

MOTORS WITH POWER UP TO 850 W

LFB SERIES - Reversible

WATT: 160 / CONSUMPTION: 400 NI/1'

Data measured at pressure of 6 bar - Minimum supply hose diameter: 6 mm.

Data sheet
LFB1R



1. Cylindrical keyed shaft
2. Grip zone
3. Air inlets
4. Air exhaust

Technical specification

- Model	LFB1R
- Code	8731183
Speed rpm - No-load	3200
Speed rpm - at Max Power	1800
Torque Nm - at Max Power	0,8
Torque Nm - Stall Torque	1,4

Form features

The normal delivery condition: cylindrical shaft and body as shown in the photo.

Optional:

Shaft

- threaded - indication /AF (left rotation excluded - subject to checks for reversible)

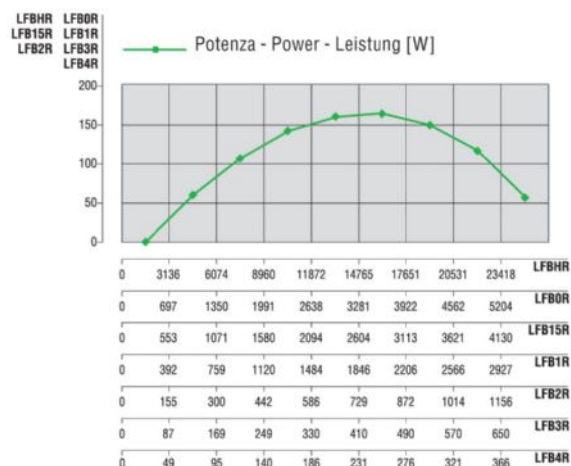
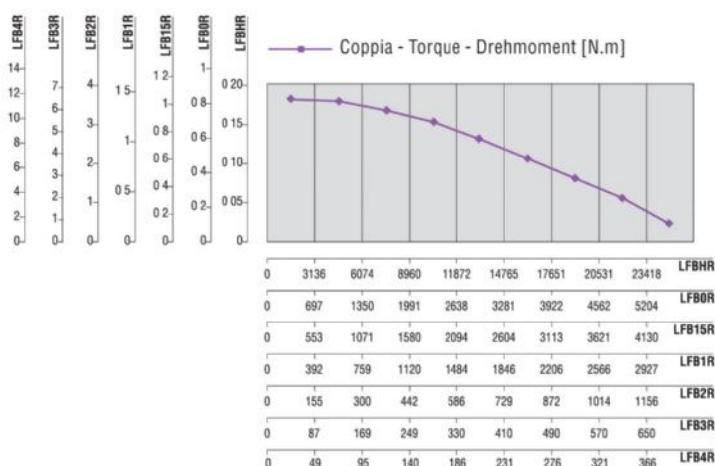
- conical - indication /AC

- with collets - indication / AP

Body

- with diamond flange coupling

Characteristic curves



MOTORS WITH POWER UP TO 850 W

LFB SERIES - Reversible

WATT: 160 / CONSUMPTION: 400 NI/1'

Data measured at pressure of 6 bar - Minimum supply hose diameter: 6 mm.

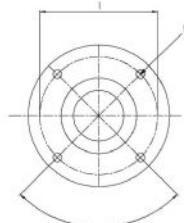
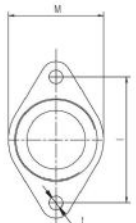
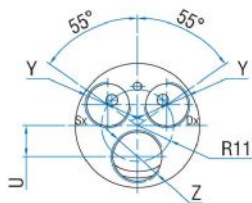
Data sheet
LFB1R

Permissible radial and axial loads

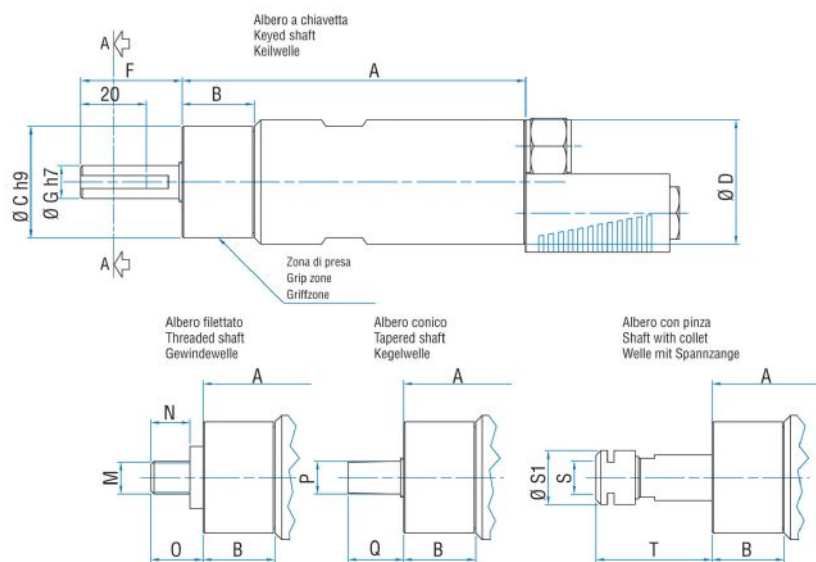
Model	Code	Fr (N)	Fa (N)	Co (N)
LFB1R	8731183	1050	550	2350

Overall dimensions

Serie LFB Reversible
Series LFB Reversible
SerieLFB Umsteuerbar



Flange disponibili per alcuni modelli.
Flanges available for some models.
Flansche erhältlich für einige Modelle.



Model	Code	A	B	C	D	F	G	H	I	L	M	N	O	P	Q	S	S1
LFB1R	8731183	105	22	34	38	31	10	2,5	4	M4	3/8"x24UNF	12	16	B10	17	ER16	22