

Accessori per motori pneumatici

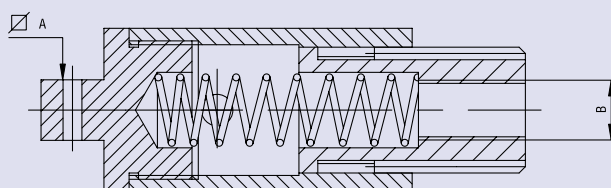
Accessories for pneumatic motors

Zubehör für Druckluftmotoren

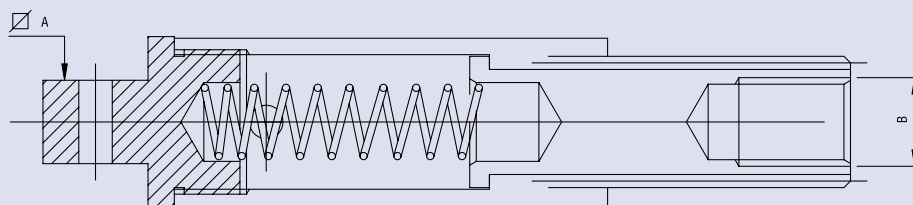
Gruppi compensazione

Compensation units

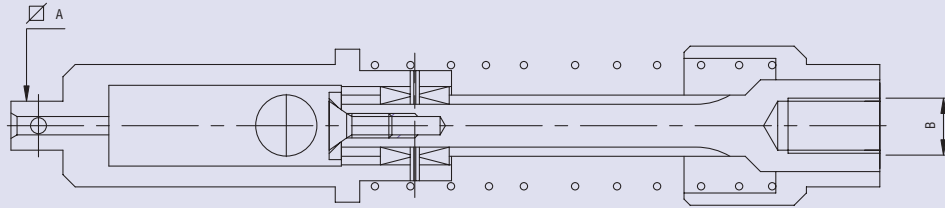
Ausgleichseinheiten



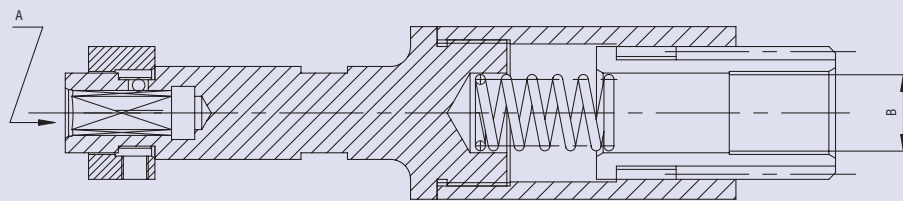
Descrizione Description Beschreibung	Codice Code Bestellnr.	A	B
GR. ESTREMITÀ CORTA ATT. 3/8 UNF	7630018	3/8"	3/8"x24 UNF
GR. ESTREMITÀ CORTA ATT. 3/8 UNF Q. 1/2	7630018.1	1/2"	3/8"x24 UNF
GR. ESTREMITÀ CORTA ATT. 1/2 UNF	7630019	1/2"	1/2"x20 UNF
GR. ESTREMITÀ CORTA ATT. 1/2 UNF Q. 3/8	7630019.1	3/8"	1/2"x20 UNF



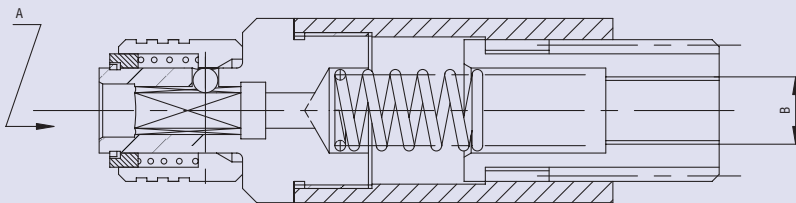
Descrizione Description Beschreibung	Codice Code Bestellnr.	A	B
GR. ESTREMITÀ LUNGA 1/2-3/8 UNF	7630036	1/2"	1/2"x20 UNF
GR. ESTREMITÀ LUNGA ATT. 1/2 UNF Q. 3/8	7630047	3/8"	1/2"x20 UNF



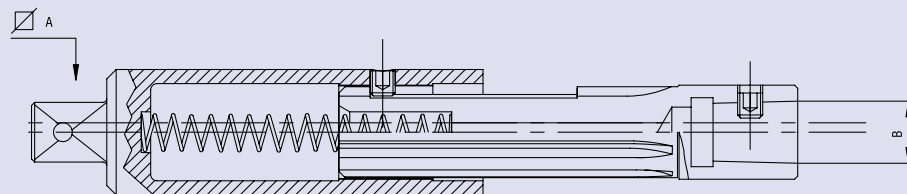
Descrizione Description Beschreibung	Codice Code Bestellnr.	A	B
GR. ESTREMITÀ LUNGA ATT. 1/4 UNF	7630020	1/4"	3/8" x24 UNF
GR. ESTREMITÀ LUNGA ATT. 1/2 UNF	7630021	1/2"	1/2" x20 UNF



Descrizione Description Beschreibung	Codice Code Bestellnr.	A	B
GR. ESTREMITÀ ALFB SCAN 3/8 UNF	7630027	es. femm. - 1/4" hexagonal socket coupling - Innensechskant-Aufnahme 1/4"	3/8" x24 UNF
GR. ESTREMITÀ ALGS SCAN 1/2 UNF	7630028	es. femm. - 1/4" hexagonal socket coupling - Innensechskant-Aufnahme 1/4"	1/2" x20 UNF

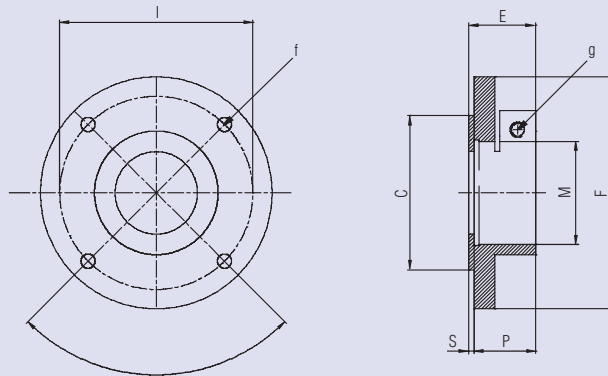


Descrizione Description Beschreibung	Codice Code Bestellnr.	A	B
GR. AGGANG. RAP. SCAN. 3/8 UNF	7630029	es. femm. - 1/4" hexagonal socket coupling - Innensechskant-Aufnahme 1/4"	3/8" x24 UNF
GR. ESTREMITÀ 1/2X20 ES. 1/4 RAPIDO	7630032	es. femm. - 1/4" hexagonal socket coupling - Innensechskant-Aufnahme 1/4"	1/2" x20 UNF



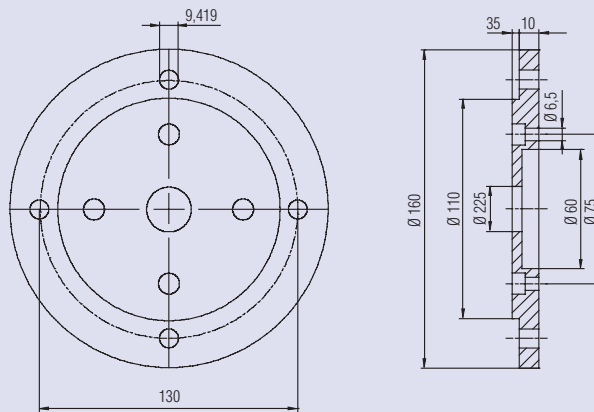
Descrizione Description Beschreibung	Codice Code Bestellnr.	A	B
GR. ESTREMITÀ ATTACCO D.14 Q.1/2	7630038	1/2"	D.14
GR. ESTREMITÀ ATTACCO D.12 Q.1/2	7630039	1/2"	D.12
GR. ESTREMITÀ ATTACCO B10 Q.3/8	7630040	3/8"	B10

Flange
Flange
Flansche



Serie Series Serie	Codice Code Bestellnr.	f	g	C	E	F	I	M	P	S
LCYO	5191030	∅ 5	M5	∅ 40	18	∅ 60	50	∅ 26	16	2
LFB	5191031	∅ 5	M6	∅ 50	22,5	∅ 80	65	∅ 34	20,5	2
LGS - SL6S	5191032	∅ 5	M6	∅ 60	26	∅ 90	75	∅ 40	24	2
P - T	5191033	∅ 5	M8	∅ 70	32	∅ 105	85	∅ 48	29	2

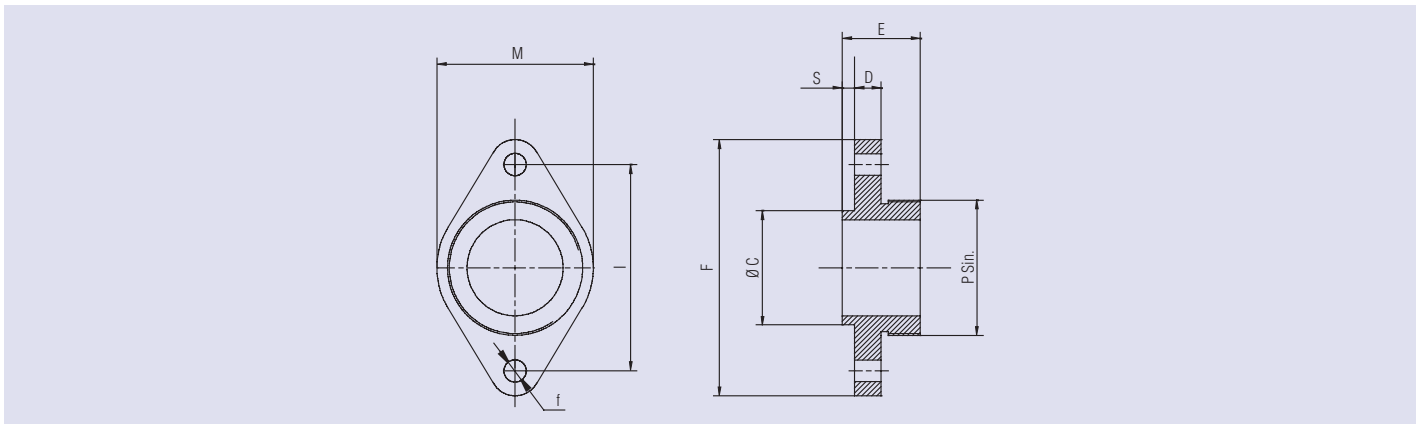
Flangia per motori serie LKW
Flange for LKW series motors
Flansch für Motoren Serie LKW



Serie Series Serie	Codice Code Bestellnr.
LKW	5191015

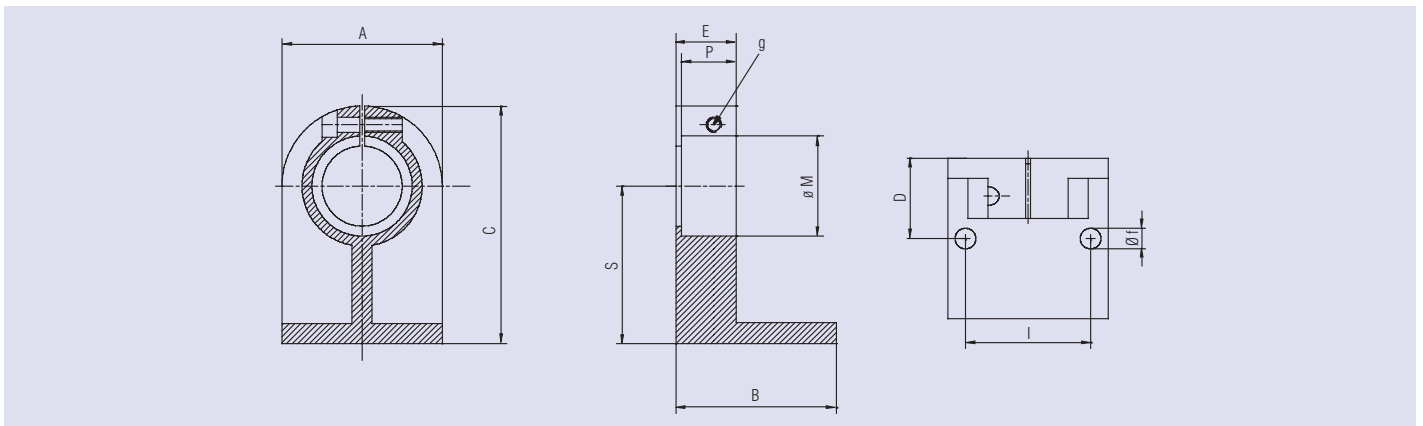


Flange
Flange
Flansche



Serie Series Serie	Codice Code Bestellnr.	f	C	E	F	I	M	P	S
LACS120Y - 400/600G - LFB	5191036	6,25	32	19	66	52	38	M30 x 1,5	3,5
LACS80/120/200 F - 400/600 G - LGS	5191037	6,25	32	22	72	58	44	M38 x 1,5	3,5
LACS80/120/200 G-GR - 35/70/90 AT	5190222	8,25	40	23	90	70	50	M45 x 1	5

Supporti
Support
Halter



Serie Series Serie	Codice Code Bestellnr.	f	g	A	B	C	D	E	I	M	P	S
LCYO	5133056	Ø 6	M5	48	48	64	24	17	36	Ø 26	15	40
LFB	5133057	Ø 6	M6	58	58	85	29	21	46	Ø 34	19	56
LGS - SL6S	5133058	Ø 8	M6	64	64	95	32	24	50	Ø 40	22	63
P - T	5133059	Ø 8	M8	80	80	111	40	30	65	Ø 48	27	71

Soluzioni per motori con pinza

Fittings for motors with collets

Lösungen für Motoren mit Spannzange

Soluzione A) Albero portapinza integrato. I motori della serie LCY / LFB / LGS / SLGS possono essere forniti a richiesta con un albero portapinza ER integrato (motori versione AP). I modelli LCY e LFBH montano pinze ER11, i modelli LFB (escluso LFBH), LGS e SLGS montano pinze ER16.

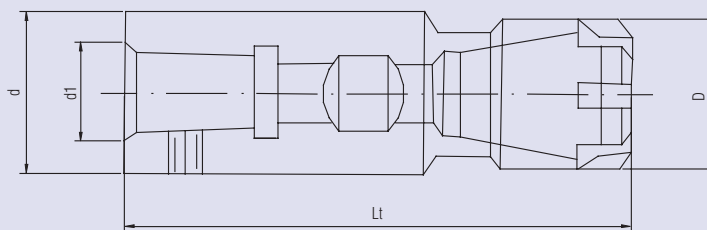
Soluzione B) Mandrino portapinza per motori con albero conico.

Solution A) Built-in collet holder shaft. Motors in the LCY, LFB, LGS and SLGS series can be supplied on request with the ER built-in collet holder shaft (AP version motors). LCY and LFBH models are fitted with ER11 collets. The LFB (with the exception of LFBH), LGS and SLGS models are fitted with ER16 collets.

Solution B) Collet chuck for motors with tapered shaft.

Lösung A) Integrierter Spannzangenhalter. Die Motoren der Serie LCY / LFB / LGS / SLGS sind auf Wunsch mit integriertem Spannzangenhalter ER (Motoren in AP-Ausführung) lieferbar. Die Modelle LCY und LFBH sind mit Spannzangen ER11, die Modelle LFB (mit Ausnahme von LFBH), LGS und SLGS sind mit Spannzangen ER16 ausgerüstet.

Lösung B) Spannfutter für Motoren mit Kegelwelle.



Codice Code Bestellnr.	d1	Lt	d	D	Capacità pinze Collet size Spannweite
3841402	B10	60	20	16	0,5÷7 mm
3841401	B12	55	25	22	0,5÷10 mm

Accessori per motori con pinza

Accessories for motors with collets

Zubehör für Motoren mit Spannzange

Pinze ER

ER collets

Spannzange ER

Codice Code Bestellnr.	ø mm	Materiale Material Werkstoff	Modello motore Motor model Motoremodell
3824611.-	1÷7 ER 11	acciaio - steel - Stahl	LCY - LFBH
3824616.-	3÷10 ER 16	acciaio - steel - Stahl	LFB - LGS - SLGS - P